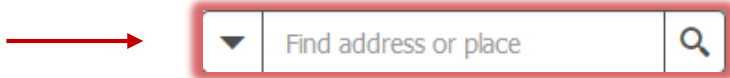




GIS
Web Map
Users Guide

Search & Information

To search by address locate the search box in the top left corner of the map.



Type the address in the following format:

2 N Main St

House Number Street Pre Direction Street Name Street Type

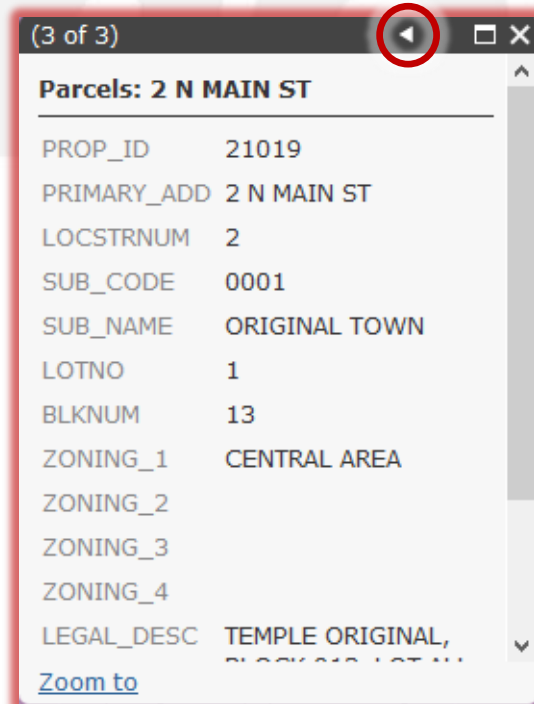
Also search by street intersection:

N Main St & W Central Ave

Use the "&" to separate the street names

To get more information about a property click on the parcel.

Click arrow to see more information



Legend & Layer List

To see the legend and layer list, click on the icons in the upper right hand corner of map.



Legend

ZoningMap

Streets

- EXPRESSWAY
- MAJOR ARTERIAL
- COLLECTOR
- LOCAL STREET
- MINOR ARTERIAL
- PRIVATE
- RAMP

Railroad

- +

Outblock Numbers

Parcels

-

Zoning

- HI - CUP
- UE
- UE - PD
- SF-1
- SF-1 - CUP
- SF-1 - PD
- SF-2
- SF-2 - PD
- SF-3
- SF-3 - PD
- SF-3 - CUP, PD
- SFA
- SFA-2
- SFA-2 - PD
- SFA-3
- SFA-3 - PD
- 2F
- 2F - CUP
- 2F - PD
- MF-1
- MF-1 - CUP
- ME-1 - PD

Layer List

Operational Layers

- Labels
- ZoningMap
- Streets
- Railroad
- Outblock Numbers
- Subdivision
- Parcels
- FEMA Flood Zones
- Zoning
- ETJ Boundary

Click on arrow to see additional layers

Check the box to turn on and off layers



Print Tool

Zoom to the map area. Click the print tool.

Print [X]

Map Title:

Layout:

Format:

1.

To change the print size and orientation (Default: 8.5 X 11 Landscape)

To change the image file type (Default: PDF)
Click to start the creation of the print file.

Print [X]

Map Title:

Layout:

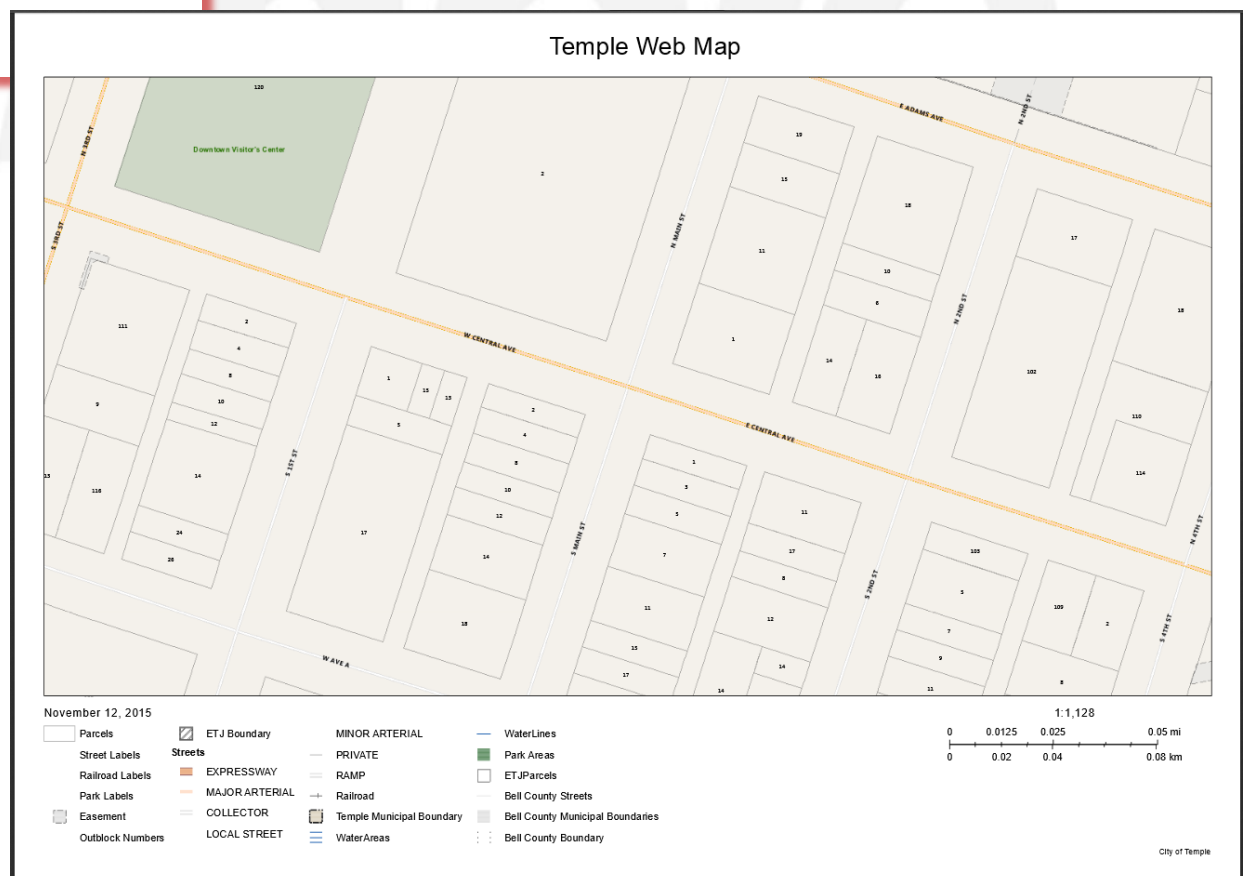
Format:

1. **Temple Web Map**

Once the print is finished processing, click file to open, view, and print PDF.

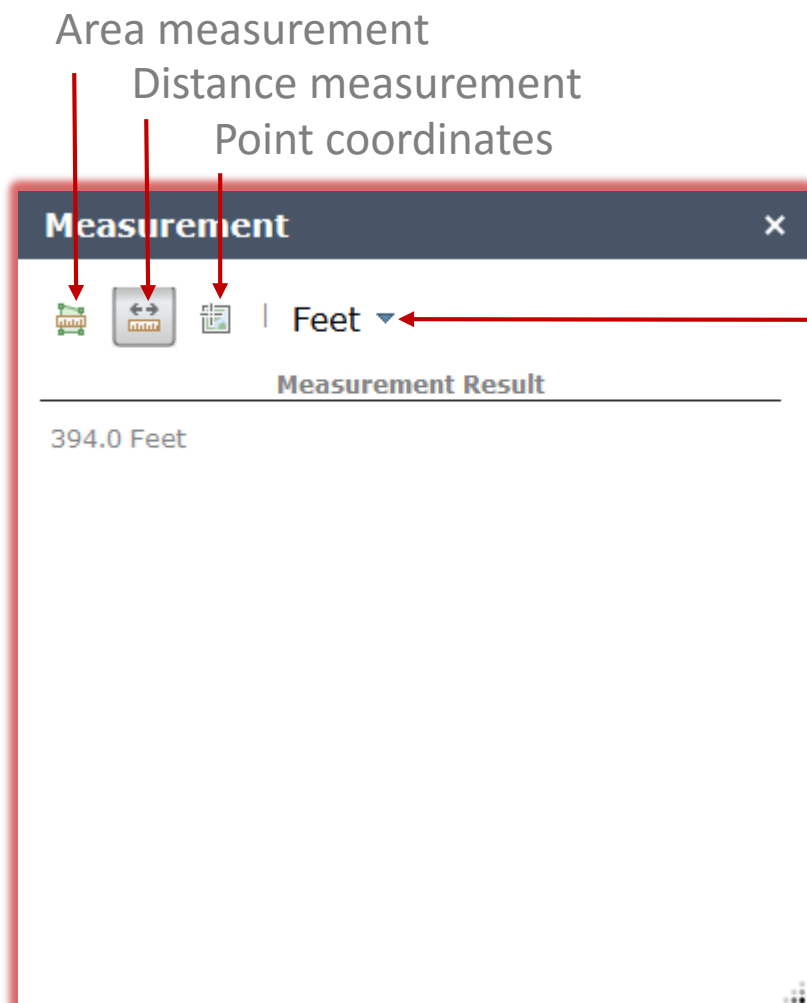
When you are done creating prints, please click clear prints to delete the files.

Sample of print layout



Measure Tool

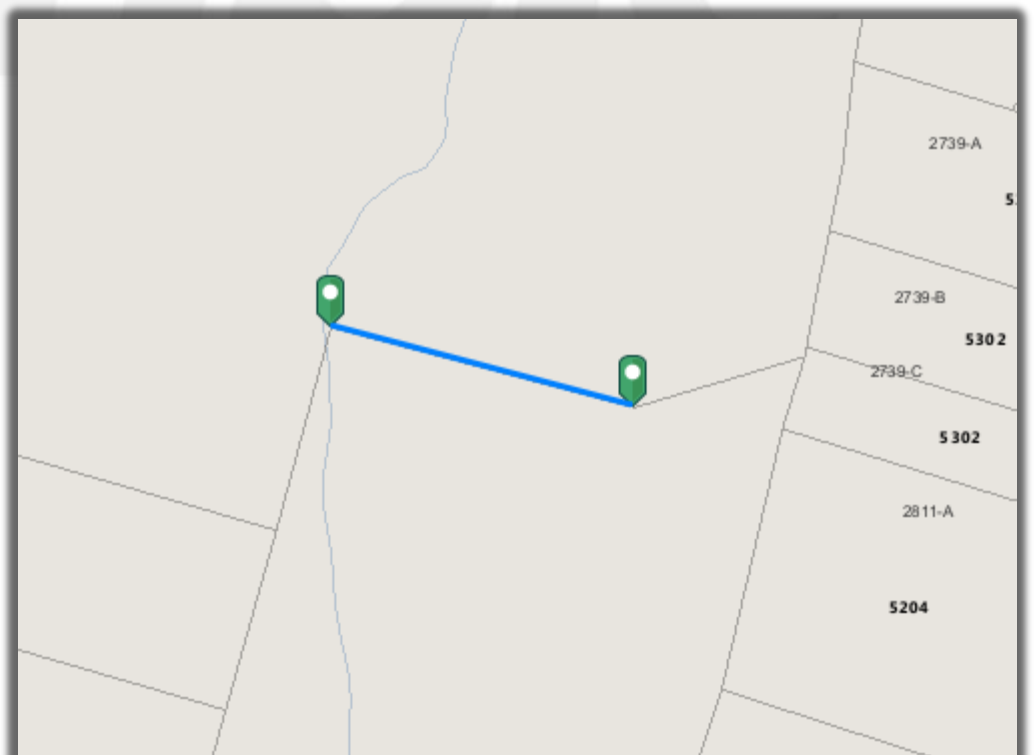
Click the measure tool. Select the type of measurement.



Click to change the unit of measurement

Single click on the map to start the measure. Double click to complete the measure. For point coordinates it is a single click.

When finished click the white x in the right hand corner of the tool dialog, or select another type of measurement, to clear the map.



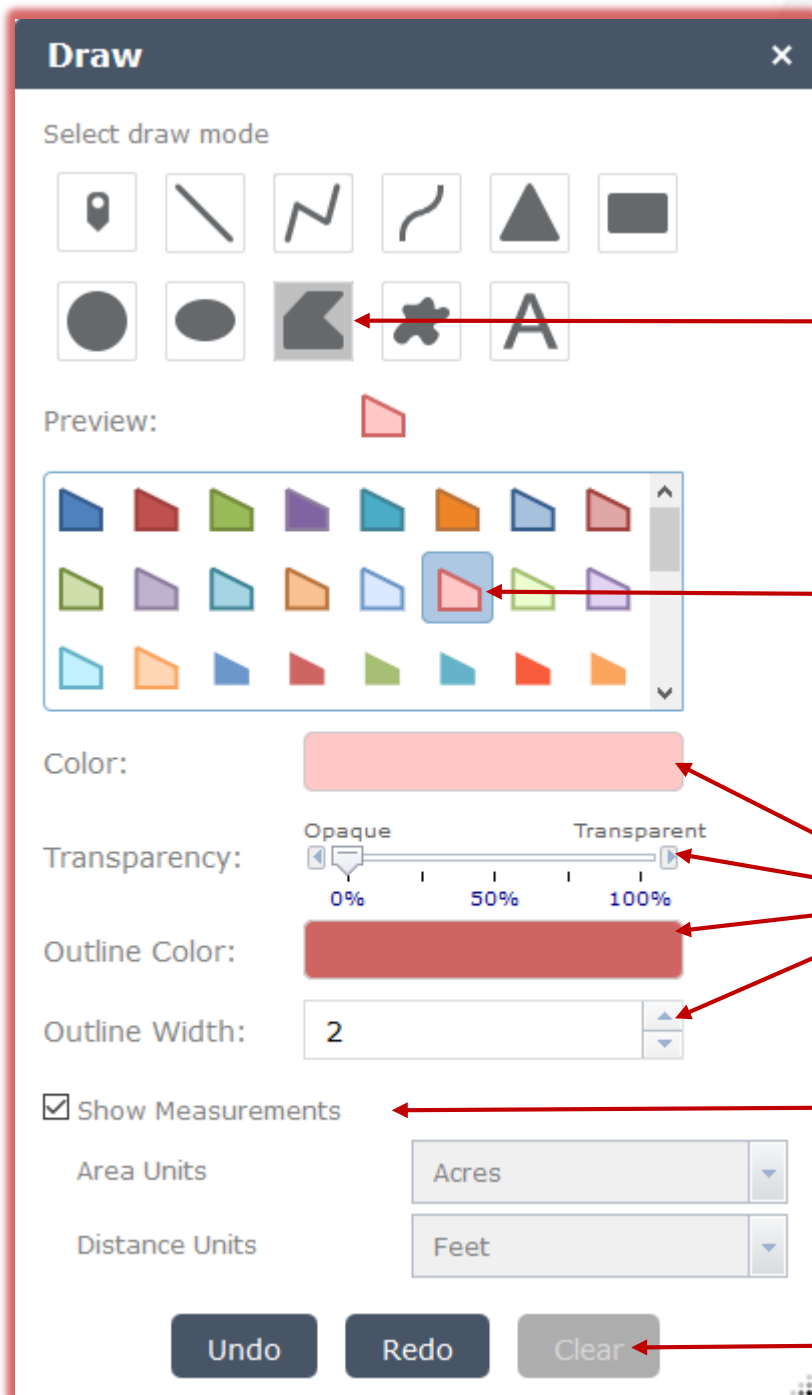
Draw Tool

Click the draw tool. Select the draw mode.

Draw Mode:



Click and drag the lower right hand corner to see all options for the mode.



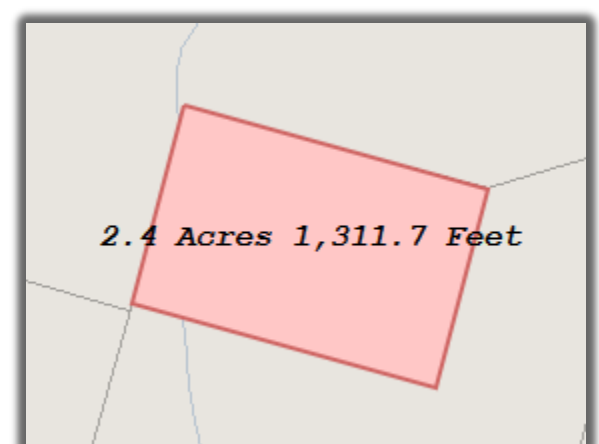
Always make sure a mode is selected or nothing will draw.

Select a default style for the mode

Click to change the default style settings. Each mode settings is different depending on which mode is selected. If the text mode is selected, complete text contents before clicking on map.

Check the box to add measurements to drawing.

Click to delete drawing from map.



Once the settings and style is chosen, drag the mouse cursor to the map and follow the popup dialog to create the drawing. If no dialog pops up, make sure a mode is selected.